

Novo-Gate Series VoIP Gateway

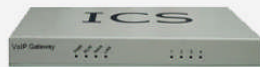
ICS Novo-Gate Series VoIP gateways matches the density requirements for smaller locations while meeting Service Provider's demands for scalability. The modular Novo-Gate is extremely scalable and supports multiples 8 analogue ports in various FXS/FXO configuration. It is designed to interface IP networks in enterprise or small-scale carrier location. Incorporating the innovative Voice over Packet technology, the Novo-Gate enables rapid time-to-market and reliable cost-effective deployment of next generation networks.

The Novo-Gate supports a variety of telephony interfaces. It contains up to 4 regular FXS or FXO interfaces modules with 8 ports, where 1 FXS lien can be used as a life-line interface for switching to the PSTN.

Analog FXS – connecting analog phones and fax machines to the IP network.

Analog FXO – connecting analog lines from the Central Office (CO) or PBX to the IP network

Novo-Gate offers rich features, high quality voice, high compatibilities, and Many other advantages. In addition to supplementary functions like Caller ID, Call Forwarding, and Call Routing, Broadcasting Secon-stage Dialing, and Auto Dialing.



NG 4 & 8 Ports



NG 8/16/24/32 Ports

- Field programmable CP tone detection and generation to support PBX and CO line interconnections.
- Supports one life-line additional.
- Supports programmable line interfaces with country specific telephone settings.
- Supports ITU standard voice codecs and voice processing algorithms including G.711A, G.711U, G.729, G.723, and G.165 Echo Cancellation as well as Fax T.38.
- Web management interfaces ensures rapid deployment/reduces demands on MIS resources.
- Backup and Restore Configuration file enables you to restore or to back up the current configuration the gateway is using.
- Network administrators can remotely monitor and perform routine maintenance/trouble-shooting via Internet browser session.
- Support call forwarding, call transfer, call waiting caller ID, call return, call back, speed dial, block and accept caller ID, and distinctive ringing.
- Supports Dynamic IP/ PPPoE client support
- Supports DHCP client support
- Supports gateway-gateway direct routing and gateway-gatekeeper assisted routing mode

Novo-Gate Series VoIP Gateway

Features

Modularity and Capacity	4, and 8 FXS analog ports; 8 FXO analog ports; 16 to 32 analog ports: 4 slots for analog FXS or FXO modules; up to maximum of 32 analog ports
VoIP Protocols	4FXS, 8FXS, and 8FXO: H.323, SIP, and MGCP 16 to 32 analog ports: H.323 and SIP
Voice processing	Voice Codec: G.711A, G711U, G.729, and G723.1 Echo cancellation: G165, with 16,25ms tail length Dynamic Jitter buffer; Voice Activity Detection (VAD) ; and Comfort Noise Generator (CNG)
Calling Control	Calling/Called Number Mapping; Line Hunt
Fax processing	T.38 Fax Relay
Billing	Polarity reverse
Gateway Configuration	Web based user Interface
Remote provisioning	Through WEB mode

Signaling

Off hook detection	FXS loop start and DDI
VoIP protocols	H323V4, SIP V2.0 Supports gateway-gateway direct routing and gateway-gatekeeper assisted routing mode
Network protocols	DHCP client, DHCP server, PPPoE Client, RTP/RTCP, IP/TCP/UDP/ICMP DNS
FXS Signaling	Loop start/DTMF

Hardware

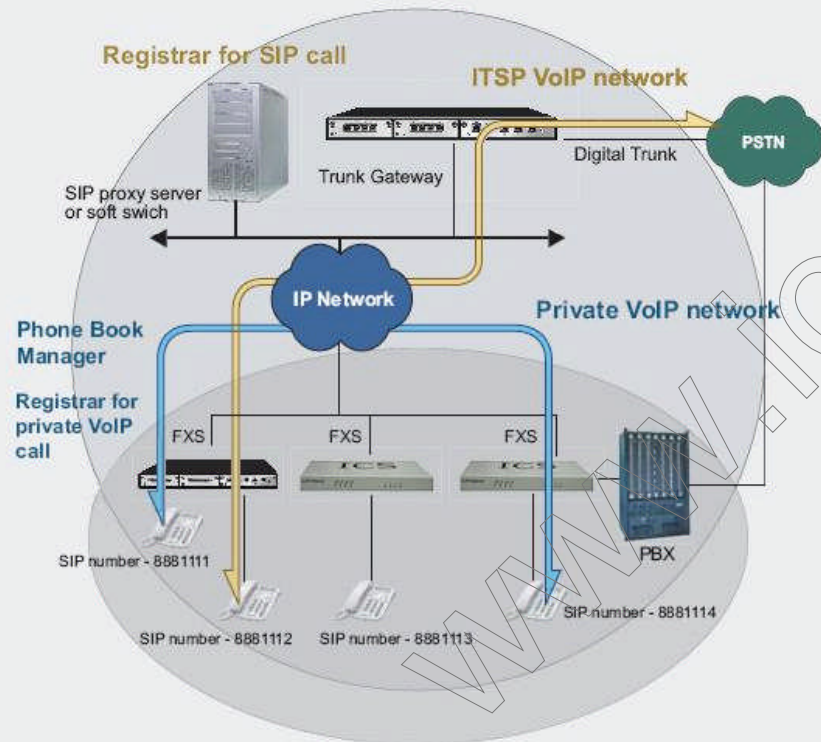
Max Line Length	3000 meters
FXO Interface Connector	RJ-11
Ethernet Interface Connector	One Rj45 port WAN Ethernet 10 baseT One Rj45 port LAN Ethernet 100base T One Rj45 port for Console
Input Voltage	Power Adapter 100-240V 50-60Hz DC
Power Consumption	NG70400/70800: 22W (Max.); NG716X/732X: 40W (Max.)
Dimension (H x W x D)	NG70400/70800: 230X155X28 millimeter; NG716X/732X: 440X315X44 millimeter
Weight	NG70400/70800: 1.5 kg; NG716X/732X: 4kg

Environmental Requirements

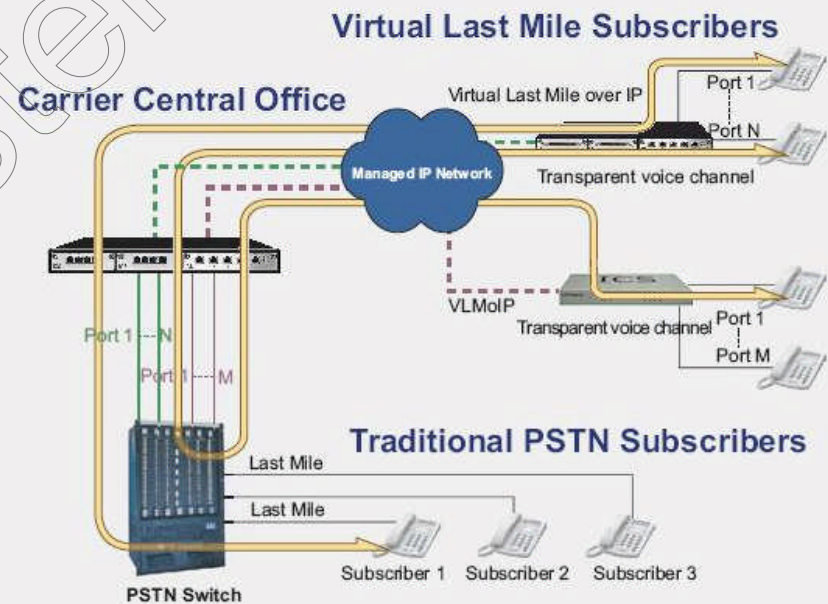
Operating Environmental	0 to 60° C, Non-Condensing Humidity 10% to 90%
Non-Operating Environmental	-10 to 70° C

Novo-Gate VoIP Gateway Applications

Dual network VoIP - ITSP + Private

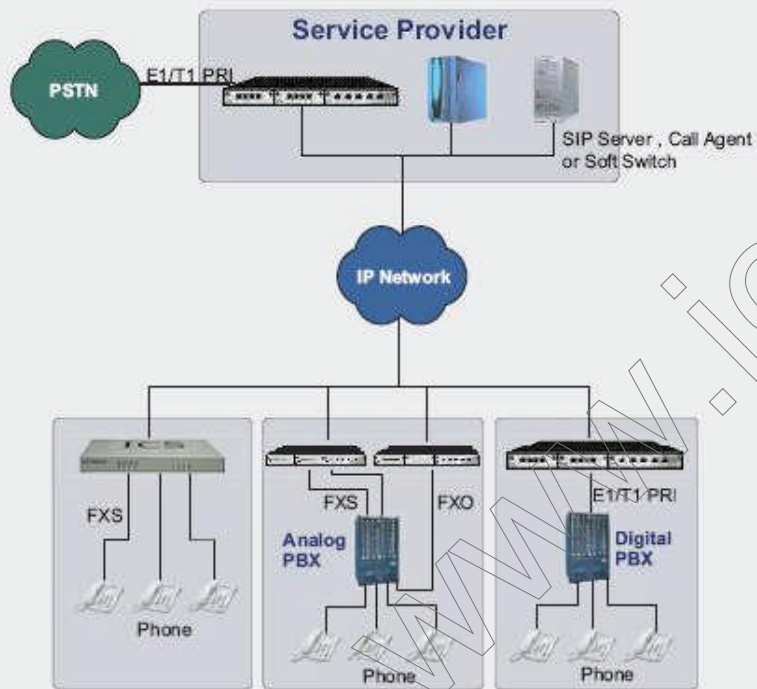


Line extension over IP



Novo-Gate VoIP Gateway Applications

ITSP/ISR VoIP network



Private SMB VoIP network

